

**Description**

RS-DL700E+ offers outstanding image quality and temperature measurement performance in an affordable, rugged and easy to use infrared camera. It works as a professional tool effective in different applications such as power plant, petrochemicals, scientific research, fire fighting, and building inspection, metallurgy, etc.

**Features**

- 384×288 uncooled FPA detector
- Auto focus
- Dual storage
- Full screen CCD

**Specification**

**Detector**

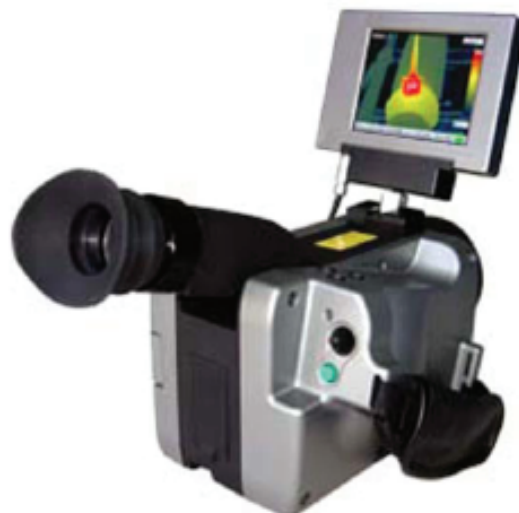
- Detector type uncooled FPA microbolometer
- Array size/format 384×288

**Image**

- Field of view/min focus distance 16°×12°/0.5m
- Spatial resolutions(IFOV) 0.88mrad
- Thermal sensitivity 0.06°@30°
- Frame rate 50/60HZ
- Focus Auto/Electronic focus
- Electronic zoom 1~8X continuous
- Spectral range 8~14μm
- Viewfinder Built-in high-resolution color LCD
- LCD High-resolution color LCD, 640×480

**Measurement**

- Temperature ranges -20°C+500°, optional up to +1200°
- Accuracy ±2° or ±2% of reading, whichever is greater
- Measurement correction Automatic/Manual
- Measurement mode Up to 10 movable spots. Up to 5 movable areas(maximum, minimum and average temperatures).Line profile. Isothem. Temperature difference.Alarm(voice,color)



**Specification**

**Measurement**

- Color palette 9 palettes changeable (Iron, rainbow, Grey and Grey inverted, etc.)
- Image adjustment Auto/Manual gain and brightness
- Setup functions Date/time, temperature unit, language
- Emissivity correction Variable from 00.1 to 1.0 or select from listings in pre-defined material list
- Ambient temperature correction Automatic correction according to user input
- Atmospheric transmission Automatic correction according to user input object distance, relative humidity, ambient temperature

**Image Storage**

- Storage Card Built-in flash memory, CF card (1G), Up to 2000 images
- Storage mode Automatic/Manual single image saving
- File format-thermal JPEG, 14 bit thermal image with measurement data
- Voice annotation Input via built-in microphone Up to 40 seconds of digital voice per image stored with image
- Image improvement Averaging (S2, S4, S8, S16), Spatial filter

**Power**

- Laser pointer Class 2, 1mw/635nm (red)
- Battery type Li-ion, rechargeable
- Battery operating time 2 hours continuous operation
- Charging system Intelligent charger or power supply adaptor (optional) online charge
- Power saving YES
- External power 10~15V DC

**Environment**

- Operating temperature -15°C+50°
- Humidity ≤90% non-condensing
- Encapsulation IP54

**Physical**

- Weight 1.69Kg
- Dimensions 305mm×130mm×135mm

**Interface**

- External DC input Yes
- Audio output Yes
- Video output PAL/NTSC
- USB Image, measurement data and voice transfer to PC

