

The future of technology

Eurologix Newsletter

THE LATEST NEWS ON PIONEERING NEW SECURITY TECHNOLOGY

- NEW B.O.S.S. I Shoe Analyser
The new lightweight, portable, versatile orifice scanner
- NEW B.O.S.S. Series Chairs
The ultimate Body Orifice Screening System
- CEIA HI-PE Multi-Zone Archway
For effective, high speed metal detection
- CEIA Handheld Metal Detector
Low cost, high security, lightweight and portable.

Featured Products

- B.O.S.S. I: Shoe Analyser
- B.O.S.S. II
- B.O.S.S. III
- HI-PE Multi-Zone Archway
- Handheld Metal Detector
- Corporate 5030
- IP Camera

B.O.S.S. I Shoe Analyser/Body Orifice Scanner

Walk Through Metal Detectors & X-Ray Machines are not enough to prevent unwanted metal contraband from entering or leaving controlled areas! Walk Through Metal Detectors have inconsistent detection fields with areas that have weak performance especially at floor levels.

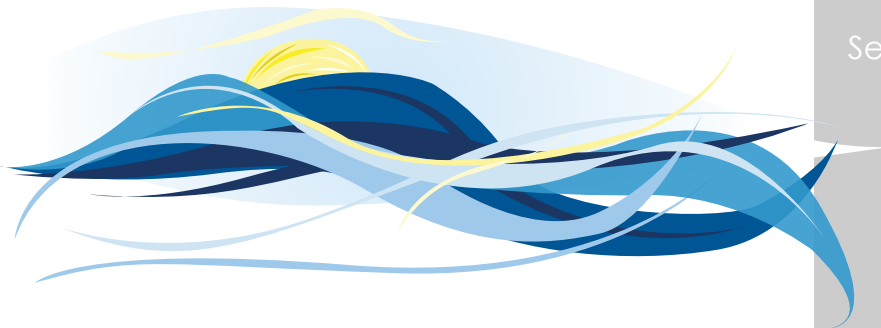
The BOSS I is safe, rugged, reliable and harmless to pregnant women, with an ergonomic design. The unit can also be used as a very portable Body Orifice Scanner, that can be used for spot checks on Prisoners in cells or suspects being held in custody in Police Cells for inspection of contraband or with mobile search teams deployed in public areas.

FEATURES:

- Fast
- Cost Effective
- Easy To Use
- High Sensitivity
- Automatic Floor Calibration
- Resistant to Interference
- Very lightweight and Portable
- Portable Body orifice Inspection
- Internal long life Battery > 10 Hours
- Rugged design for operational use
- Contraband and Threat Detection
- Smart Diagnostics
- Detection of SIM cards and small prison issue razor blades



Unit 2, Antom Court
Tollgate Drive, Tollgate Industrial Estate
Stafford, ST16 3AF, UK
Phone: 03300 770025
Fax: 03300 770026
E-mail: Info@eurologix.eu



The future of technology

NEW B.O.S.S. Series Chairs

The B.O.S.S security system is designed for modern security inspection of body cavities through its innovative technology design. The operation of the B.O.S.S security system prevents the de-grading body orifice manual search that cannot necessarily penetrate all cavity areas with the speed and accuracy of technology detection.

The Unit utilises visual and audible alarms to alert the operator to the area of the body cavity that contains concealed objects. The B.O.S.S security system has undergone extensive testing with the UK Home Office and European, American regulatory professional testing agencies.

The B.O.S.S chairs have been designed for HM Prison operations.

The B.O.S.S chairs have the following advantages:

- Safe Non-Intrusive, Non-Contact search method
- Instantaneous detection in body cavities
- Mobile & easily manouvered
- User & operator friendly
- High detection & Reliability
- Penetrates body cavities



Featured Products

B.O.S.S. I:
Shoe Analyser

B.O.S.S. II

B.O.S.S. III

HI-PE Multi-Zone
Archway

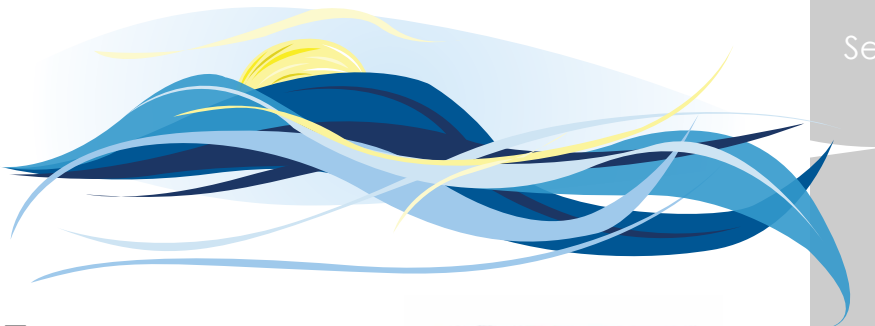
Handheld Metal
Detector

Corporate 5030

IP Camera

Unit 2, Antom Court
Tollgate Drive, Tollgate Industrial Estate
Stafford, ST16 3AF, UK
Phone: 03300 770025
Fax: 03300 770026
E-mail: Info@eurologix.eu

www.eurologix.eu

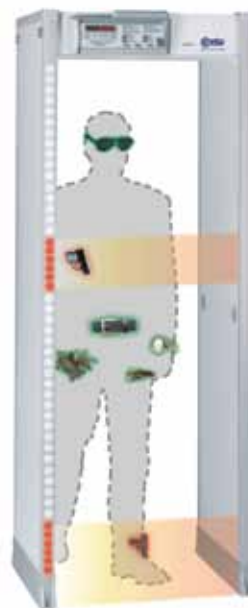


The future of technology

HI-PE Multi-Zone

HIGH PERFORMANCE WALK-THROUGH METAL DETECTOR

- High level of Detection Uniformity
- High Immunity to external interferences
- Highly visible double Display provides single or multiple location of weapons in transit
- Very high speed of Detection
- High Reliability
- Local or Remote Programming with networking capabilities



Featured Products

B.O.S.S. I:
Shoe Analyser

B.O.S.S. II

B.O.S.S. III

HI-PE Multi-Zone
Archway

Handheld Metal
Detector

Corporate 5030

IP Camera

PD 140 SVR Scanner

VERY HIGH SENSITIVITY ENHANCED HAND HELD METAL DETECTOR

- Very High Sensitivity
- Detection of both Magnetic and Non-Magnetic Metals
- Optical, Acoustical and Vibration Alarm
- Long Battery Life
- Special Ergonomic Shape
- Very High Reliability
- Easy to Use
- Self-Calibrating
- Fast Inductive Battery Charger



Unit 2, Antom Court
Tollgate Drive, Tollgate Industrial Estate
Stafford, ST16 3AF, UK
Phone: 03300 770025
Fax: 03300 770026
E-mail: Info@eurologix.eu



The future of technology

Velocity Corporate 5030

HIGH PERFORMANCE BAGGAGE/CARGO SCANNER

The Velocity Corporate X-Ray security inspection system is an innovative system for screening small packages, briefcases, mail room items and general screening security. The system combines the advantages of highly efficient, solid state detectors and digital image processing. Every unit has advanced computer imaging, advanced self-diagnostics, and smart software algorithms to provide the user with reliable high-resolution images and superior image processing. The Velocity Corporate X-Ray system is ideal for general purpose screening with compact space efficiency.



Featured Products

B.O.S.S. I:
Shoe Analyser

B.O.S.S. II

B.O.S.S. III

HI-PE Multi-Zone
Archway

Handheld Metal
Detector

Corporate 5030

IP Camera

IP Camera

THE LOW COST, HIGH SECURITY SOLUTION

Whether it's office monitoring, home, warehouse or shop security, IP Cameras are the best, most effective and lowest cost security device to give maximum peace of mind. IP Cameras are flexible, simple and highly effective, with easy installation and setup. They are equipped with automatic night vision for day/night settings, and motion detectors which can be linked to an alarm to alert you instantly.

In addition, you can log on securely and view all your IP cameras remotely using a computer or smart phone. You can also move the cameras remotely, utilising the digital pan/tilt functions, and record live video and audio.



Unit 2, Antom Court
Tollgate Drive, Tollgate Industrial Estate
Stafford, ST16 3AF, UK
Phone: 03300 770025
Fax: 03300 770026
E-mail: Info@eurologix.eu